

Flowing Wells Unified School District

Pima County

Efficiency peer groups 3 and T-1, Achievement peer group 6¹

Legislative district(s): 3, 9, and 11

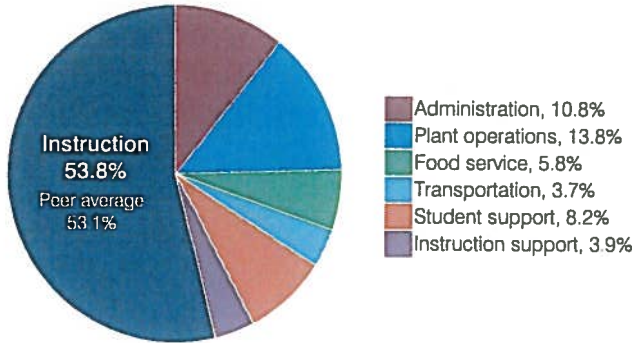
District size, location: Medium-large, Suburb

Students attending: 5,378

Number of schools: 9

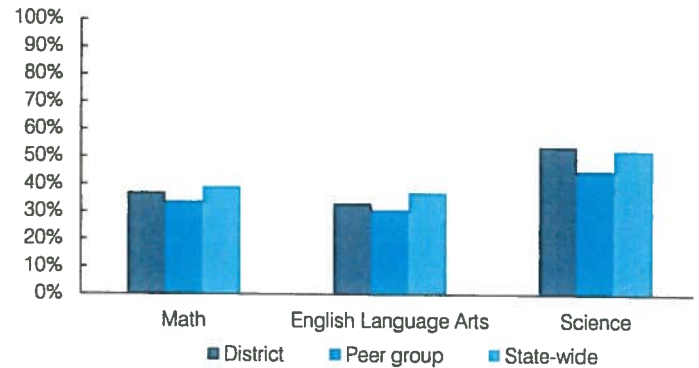
OPERATIONAL EFFICIENCY

Spending by operational area



STUDENT ACHIEVEMENT, STUDENT AND TEACHER MEASURES, AND REVENUES

Students who passed state assessments



Efficiency measures relative to peer averages

Operational area	Measure	District	Peer average	State average
Administration	Cost per pupil	\$828	\$837	\$844
	Students per administrative position	73	69	67
Plant operations	Cost per square foot	\$7.17	\$6.01	\$6.30
	Square footage per student	147	157	155
Food service	Cost per meal	\$2.99	\$3.04	\$2.88
Transportation	Cost per mile	\$6.14	\$6.81	\$3.84
	Cost per rider	\$951	\$942	\$1,198

Very low Low Comparable High Very high

Student and teacher measures

Measure	District	Peer average	State average
Attendance rate	95%	94%	94%
Graduation rate (2016)	91%	84%	80%
Poverty rate (2016)	33%	32%	22%
Special education population	15%	14%	12%
Students per teacher	18.4	16.4	18.5
Average teacher salary	\$44,255	\$44,227	\$48,372
Amount from Prop 301	\$5,055	\$5,336	\$5,840
Average years of teacher experience	10.2	12.6	11.3
Percentage of teachers in first 3 years	31%	17%	19%

Per pupil spending

Spending by area	District		Peer average	State average
	2016	2017	2017	2017
Instruction	\$ 3,977	\$ 4,117	\$ 3,991	\$ 4,377
Administration	773	828	837	844
Plant operations	1,039	1,054	965	977
Food service	431	444	324	422
Transportation	258	283	433	381
Student support	612	629	640	679
Instruction support	309	291	338	461
Total operational	\$ 7,399	\$ 7,646	\$ 7,528	\$ 8,141
Land and buildings	\$ 104	\$ 111	\$ 890	\$ 691
Equipment	139	223	406	424
Interest	161	136	258	236
Other	5	4	146	161
Total nonoperational	\$ 409	\$ 474	\$ 1,700	\$ 1,512
Total per pupil spending	\$ 7,808	\$ 8,120	\$ 9,228	\$ 9,653

Per pupil revenues

Revenues by source	District		Peer average	State average
	2016	2017	2017	2017
Federal	\$ 1,389	\$ 1,225	\$ 781	\$ 1,318
State	3,768	3,757	3,243	3,831
Local	3,145	3,277	5,097	4,443
Total per pupil revenues	\$ 8,302	\$ 8,259	\$ 9,121	\$ 9,592
Select revenues from common sources				
Equalization formula funding	\$ 4,839	\$ 4,877	\$ 5,442	\$ 5,503
Amount from Prop 123	225	227	240	245
Prop 123 additional funding	46	46	47	46
Grants	1,457	1,301	866	1,185
Donations and tax credits	98	118	157	89
Select revenues from less common sources				
Desegregation	\$ 0	\$ 0	1 of 15	
Small school adjustment	0	0	0 of 15	
Federal impact aid	0	0	3 of 15	
Voter-approved levy increases	790	892	13 of 15	

¹ See Appendix A for information such as districts included in each peer group and Appendix B for sources and methodology.

Flowing Wells USD—page 2

Instructional spending percentage

Year:	2001	2002	2003	2004	2005	2006	2007	2008	2009	2010	2011	2012	2013	2014	2015	2016	2017
Percentage:	57.8	59.4	59.7	60.6	60.7	60.0	59.0	57.7	58.4	54.8	53.2	51.9	52.3	53.1	54.2	53.7	53.8

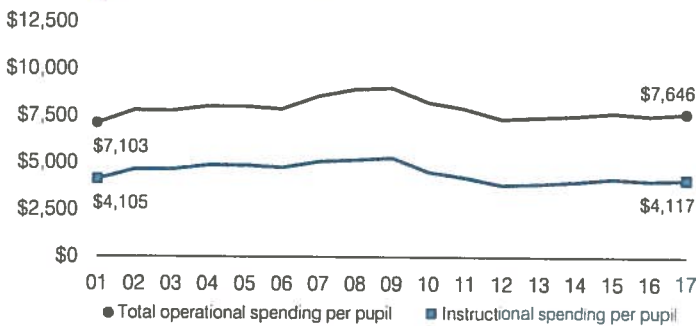
OPERATIONAL TRENDS AND FINANCIAL STRESS ASSESSMENT

Fiscal years as indicated

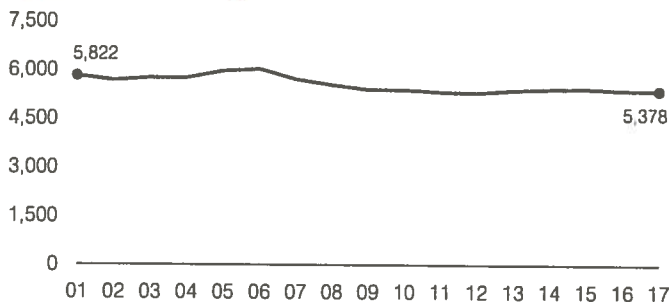
5-year spending trend (2012 through 2017)

Total operational spending per pupil, adjusted for inflation, increased by 4 percent. The percentage of dollars spent on instruction increased overall from 51.9 to 53.8 percent. As a percentage of total operational spending, instruction support decreased and plant operations decreased slightly, while student support increased slightly. Most other noninstructional areas remained stable.

Total operational and instructional spending per pupil (Inflation adjusted to 2017 dollars)



Students attending



Financial stress assessment

Overall financial stress level: **Low**

Measure: 2015 through 2017

Change in number of district students
Spending exceeded operating/capital budgets
Spending increase election results
Operating reserve percentage, Trend
Years of capital reserve held
Current financial and internal control status

Assessment

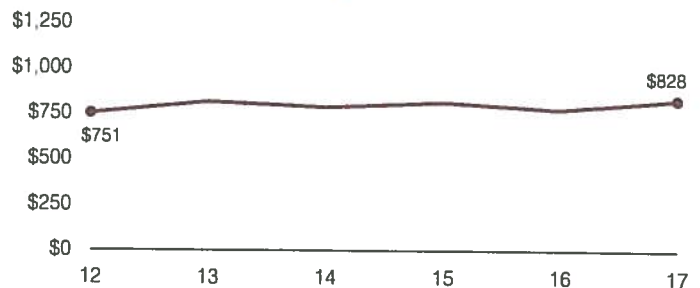
Steady
No overspending
Voter-approved
6.2%, Varying
More than 3 years
Compliant

Low

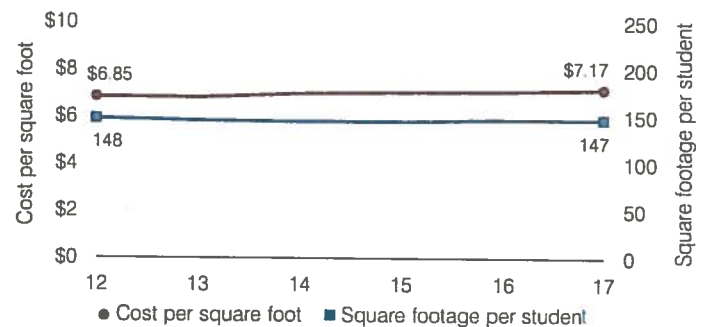
Moderate

High

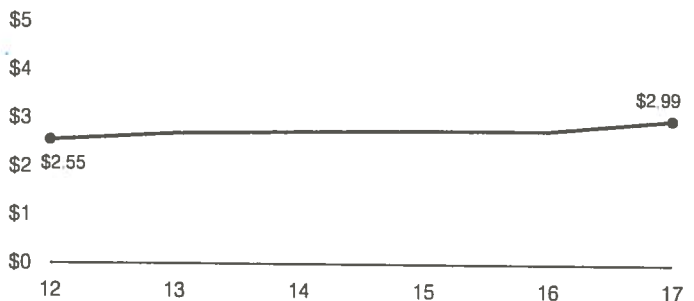
Administrative cost per pupil



Plant cost per square foot and square footage per student



Food service cost per meal



Transportation costs per mile and per rider

